

SANCREA

contract

SUMMER 25

E D I T O R I A L

*AS WE LEAVE A SUCCESSFUL SUMMER BEHIND, HERE'S A
LOOK AT A FEW PROJECTS WE BROUGHT TO LIFE.*





GIGI RIGOLATTO, MANDARIN ORIENTAL BODRUM

The seamless connection between the landscape and architecture protects the site's natural beauty, the arrival court, swimming pools, spa gardens, private gardens, pools, and terraces to guest blocks, roofscape and main restaurant terraces. Ideally located on a sixty-hectare coastal hillside at Paradise Bay with panoramic views over the Aegean Sea, this project represents the brand's first resort in Europe and become the region's most desirable address.

GIGI VIBES

*LIVING LIFE ALLA GRANDE WITH GIGI
RIGOLATTO*



Set against the breathtaking backdrop of Mandarin Oriental, Bodrum's coastline, Gigi is a beachside retreat for indulgent lunches, sunset bellinis, and enchanting nights. Celebrating Italian culinary heritage, the menu brings flavours from Tuscany to Puglia. With a bohemian-luxe ambiance, fine dining, and beachfront revelry, Gigi offers a perfect blend of elegance and joie de vivre.

Hugo Toro's vision for Gigi is a deft blend of Italian heritage and French finesse, adapted specifically for Bodrum's sun-soaked setting. The design language is inspired by Italy's rich cultural past, referencing refined Italian codes with a modern twist. The resulting atmosphere is one of relaxed sophistication, where historical elegance feels perfectly at home with the natural beauty of the Aegean.

More than just a restaurant, Gigi's an embodiment of a culture that exudes opulence, sophistication, and joy. With every corner echoing the adventures of a seasoned Milanese traveler, Gigi Rigolatto promises an unparalleled experience of Italian hospitality.



Set within one of the region's most prestigious resorts, Gigi offers sun-soaked lunches, sunset Bellinis, and magical evenings by the sea. With outdoor seating and panoramic Aegean views, the venue blends effortlessly into the resort's lush surroundings.



Gigi's 140-seat open-air terrace is furnished for languid, sun-drenched afternoons and sparkling, moonlit nights. White-clothed tables and bistro-style chairs evoke the timeless elegance of Italian sidewalk cafes. The furniture is classic and understated, designed to allow the spectacular sea views and lush terraced gardens to take center stage. Signature floral, tasselled umbrellas add a whimsical, playful touch, gently swaying in the sea breeze and providing a soft, dappled shade.



The material palette is inspired by the soft, sandy tones of the coastline and the timeless romance of Italian architecture. Toro uses textures and tones—think natural woods, delicate fabrics, and classic, clean finishes—that are both luxurious and effortless. This creates an environment that is distinctly Italian in its refinement, yet feels perfectly in harmony with the destination's sandy beaches and glittering waters.

*THE ATMOSPHERE AT GIGI IS NOTHING SHORT OF
CELEBRATORY. ROMAN ELEGANCE MEETS
AEGEAN ALLURE*

TANG, DUBAI

TROPICAL DOWNTOWN



TANG's thoughtful design extends to its iconic views of the Burj Khalifa and the Dubai Fountains. Unlike other restaurants that merely incorporate the view as a backdrop, TANG's expansive outdoor terrace seamlessly integrates the urban grandeur into its Asian-tropical inspiration. This synthesis of interior opulence and exterior marvel creates a layered experience, quiet, lavish interior framed by the dazzling performance of the city outside.

SKYSCRAPERS PUNCTURE THE CLOUDS



The layout, at over 10,000 square feet, encourages a high-energy yet sophisticated vibe, reminiscent of the vibrant izakaya scene. From the walk-in wine cellar to the meticulously designed seating arrangements, the space is engineered for both intimate gatherings and larger social celebrations. It's a place to share food, conversation, and the sheer joy of living well..

The color palette is defined by rich, enveloping chocolate tones. This moody backdrop is not about creating a heavy or claustrophobic environment; rather, it sets the stage for a dramatic interplay of light and texture. The furniture, while sleek and minimalist, is plush and tactile, inviting guests to settle in and savor the moment. This combination of streamlined forms and sumptuous materials is a hallmark of du Plessis's style, inspired in part by acclaimed architect Marcio Kogan and the modern tropical movement.

The design language of TANG, which was named after the Tang dynasty, is built on a "luxe-with-an-edge" philosophy that marries minimalist chic with opulent details. Du Plessis, celebrated for his ability to craft atmosphere, intentionally created a dark and secretive space. This is most immediately evident at the entrance, where guests are greeted by a signature marble waterfall, a feature that instantly detaches them from the urban bustle of Downtown Dubai and signals their arrival into an exclusive, more intimate world.

This is a space where the energy of the izakaya meets the elegance of fine dining, proving that in Dubai, understated opulence can be the most powerful statement of all.



TANG FAMILY

JOHANNESBURG TO DUBAI

TANG Dubai is the third location in a family of award-winning restaurants, following its successful counterparts in Johannesburg and Cape Town. This history is crucial to understanding the design philosophy. The initial TANG concept was always about creating a space where culinary theater is anchored in cultural pride.

Founder Nicky van der Walt works closely with du Plessis to ensure that each location retains this essence. The "luxe-with-an-edge" signature is a unifying thread, but each space is also tailored to its specific location. In Dubai, this means a grander scale and a more pronounced interaction with the city's architectural marvels, yet it maintains the intimate, moody ambiance that defines the brand.

TROPICAL ESCAPE

*OUTDOOR, EXQUISITE LAYER
TO THE DESIGN STORY.*



The expansive terrace was designed to integrate the iconic Dubai skyline into the Asian-tropical escape, rather than simply using it as a backdrop. This seamless connection allows guests to move effortlessly from the intimate and moody indoors to an elegant, high-energy outdoor vibe. Here, the breathtaking views of the Burj Khalifa and the mesmerizing performances of the Dubai Fountains become a vital, theatrical component of the dining experience, bathed in the soft, purposeful lighting that defines the brand.





AL KHIRAN, KUWAIT

AL KHIRAN, KUWAIT



FENIX

A ROOFTOP OASIS FOR THE MODERN BOHEMIAN

It is a town of beautiful contradiction. In Rust, Germany, the whimsical, high-tech maximalism of Europa-Park collides with the serene, natural minimalism of the Taubergießen wetlands. Here, fantasy coexists with the fundamental, and it is in this singular tension that a new aesthetic is born, an aesthetic of controlled theatricality that captivates and delights. A restaurant in this unique German town understands this paradox better than any other, using it as a guiding principle for a dining experience that is, quite simply, a work of art.



Sensory of outdoor chairs



The result is an interior that feels not just luxurious, but profoundly right for its place, a perfect balance of the two unique worlds that give Rust its singular charm.



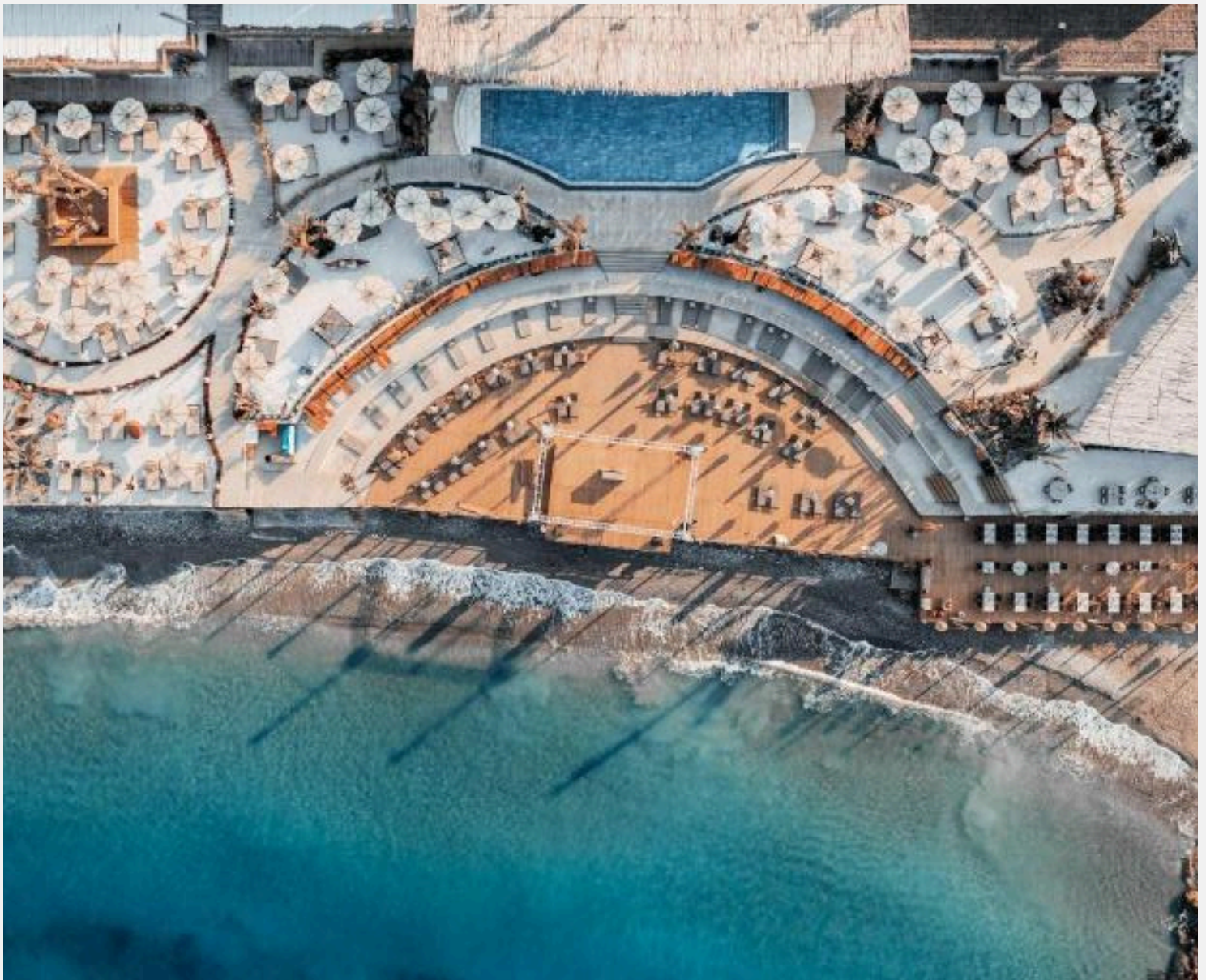
The interior design is a testament to the modern bohemian spirit, where comfort and chic sophistication are not mutually exclusive. The design team has eschewed pastiche, opting instead for a relaxed yet polished setting. Plush, layered fabrics in warm, earthy tones beckon. Intricately woven macrame hangings provide texture and character. And natural wood grains run throughout, grounding the space in a timeless, artisanal craft that echoes the region's heritage. The vibe is decidedly refined, encouraging lingering conversation and unhurried enjoyment.

It is an oasis of considered calm, a place where bohemian soul meets modern sensibility.

WYNDHAM ALANYA

TURKISH RIVIERA

In the sun-drenched coastal city of Alanya, where the turquoise waters of the Mediterranean meet the dramatic peaks of the Taurus Mountains, a new architectural voice has emerged. The recently opened Wyndham Alanya presents a design ethos that is both a celebration of its storied locale and a decisive step toward a serene, modern hospitality. Unlike the bustling, high-energy resorts often associated with this vibrant stretch of the Turkish Riviera, Wyndham Alanya curates a peaceful, restorative experience through intentional, thoughtful design.



TURQUOISE

THE DESIGN LANGUAGE OF WYDNHAM

Soft, neutral colors echo the coastal setting, while premium materials and bespoke furniture create an atmosphere of quiet comfort. Each of the 188 guest rooms, from the standard to the luxurious king suite, is appointed with modern amenities and tasteful decor, designed to provide a tranquil retreat. The lighting is subtle and ambient, intended to relax the eye and soothe the spirit after a day of sun and activity.

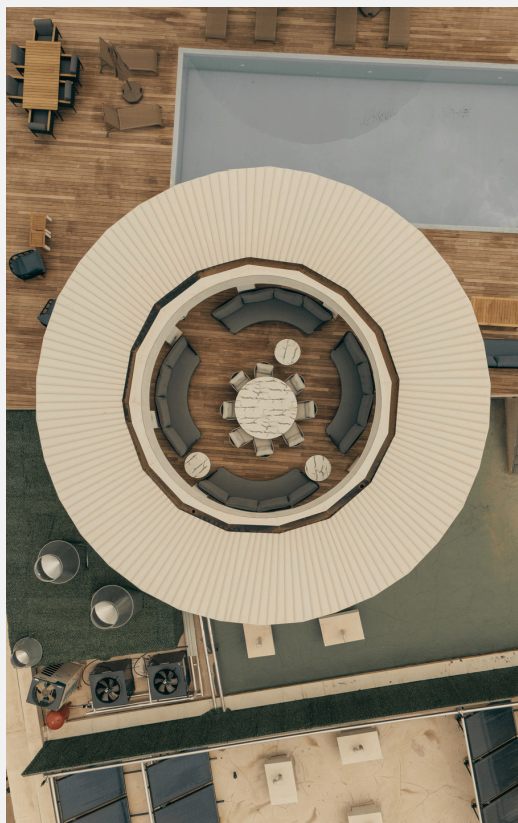
Beyond the guest rooms, the design philosophy extends to the hotel's shared spaces. Various dining venues, which serve both local and international cuisines, feature inviting, well-lit interiors and terraces, each designed to provide a different dining experience. The resort also makes a conscious design decision to offer gondola tours, a whimsical touch that adds a sense of playful discovery while keeping with the resort's tranquil atmosphere.



Subtlety is the new spectacle. Soft, neutral tones and premium materials define a space designed for quiet comfort and restorative calm.

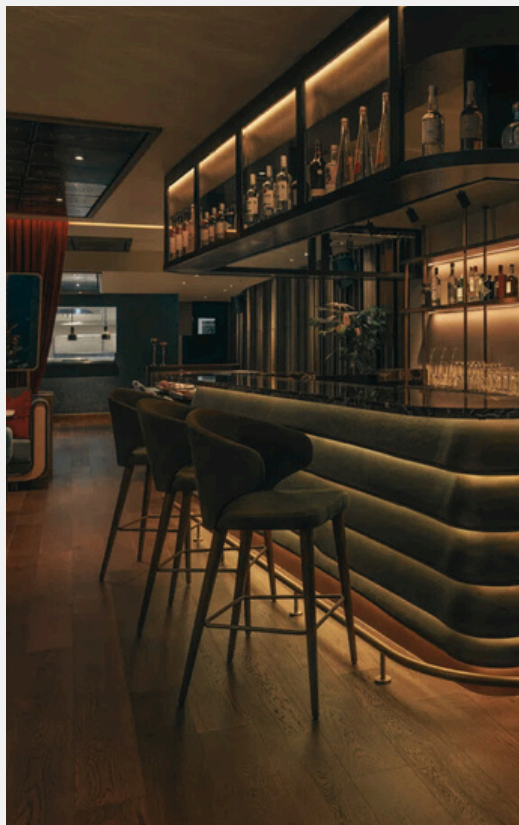


Expansive gardens overlook the Mediterranean, providing a picturesque setting for events and quiet moments of reflection.





*Before we finish on this issue of Sancrea Editorial, a selection of additional spaces we've furnished.
More can be found on our website..*



GET. SET. SAIL.



SANCREA
YACHTS